



29 ASH COURT

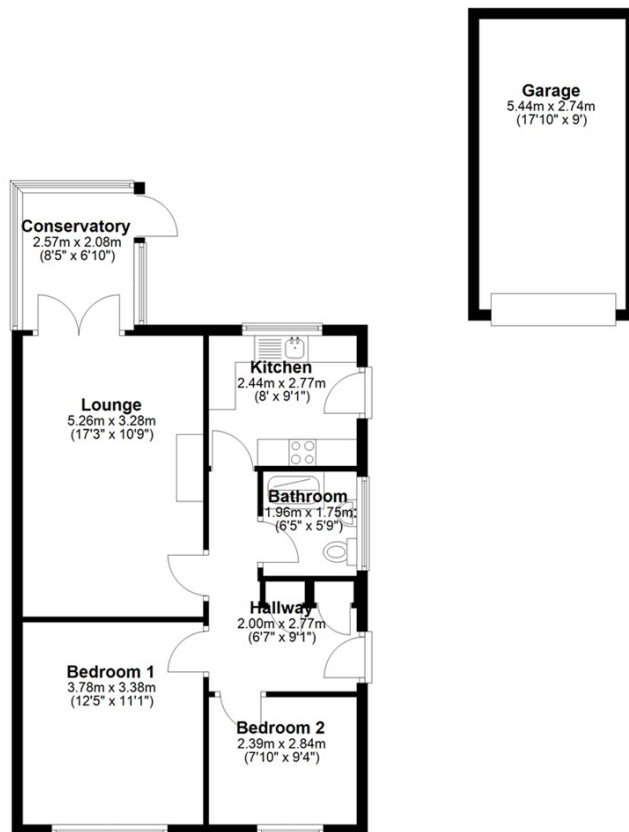
SPALDING, PE11 4XJ

£175,000

This chain free two bedroom semi-detached bungalow in the sought-after village of Donington offers spacious single-level living with a lounge, conservatory, fitted kitchen, shower room and two well-proportioned bedrooms. Outside, the property benefits from a low-maintenance garden, garage and ample off-road parking, making it an ideal home for downsizers or those seeking a peaceful village lifestyle.



Ground Floor Approx. 77.2 sq. metres (830.9 sq. feet)



Total area: approx. 77.2 sq. metres (830.9 sq. feet)
29 Ash Court



Energy Efficiency Rating		
	Current	Potential
Very energy efficient - lower running costs		
(92 plus) A		88
(81-91) B		
(69-80) C		
(55-68) D	66	
(39-54) E		
(21-38) F		
(1-20) G		
Not energy efficient - higher running costs		
England & Wales	EU Directive 2002/91/EC	

Agents Note: Whilst every care has been taken to prepare these particulars, they are for guidance purposes only. All measurements are approximate and are for general guidance purposes only and whilst every care has been taken to ensure their accuracy, they should not be relied upon and potential buyers/tenants are advised to recheck the measurements

Spalding Office Sales
11 The Crescent
Spalding
Lincolnshire
PE11 1AE

01775 713 888
enquiries@sedge-homes.com
www.sedge-homes.com

